



By almost any measure, fiscal year 2013 was a great success for the Museum of Science.

We saw a 20% increase in new gifts and pledges this year, thanks in large part to a \$10 million gift from the Yawkey Foundation. With this generous gift, the Museum will create a 5,000-square-foot gallery that will be the centerpiece of the renovations to our lobby, entrance, and box office. *The Yawkey Gallery on the Charles River* will introduce the meta-story of the Museum, that of the interdependencies of the natural and engineered worlds.

In addition, an anonymous donor made a gift of \$2.5 million to the Museum to support major environmental sustainability improvements to the lobby, parking garage, and concourse. With this gift, the Museum raised over \$33.1 million in fiscal year 2013, bringing the Campaign for the Museum of Science to \$220 million.

The Museum continued to host temporary exhibits with broad appeal for our diverse audience. In addition to great temporary exhibits like *SHIPWRECK!* and *Mammoths and Mastodons*, *Design Zone* challenged young visitors to put their creativity to work with their math skills to learn about the principles of design and engineering behind their video games, recorded music, and amusement park rides.

In partnership with the Israel Antiquities Authority, Discovery Times Square, and The Franklin Institute, the Museum presented *The Dead Sea Scrolls: Life in Ancient Times*, the latest in our World Treasures series. The Museum offered a range of public programs in support of this exhibition, featuring scholars from around the world.

In December we presented the world premiere of *Moons: Worlds of Mystery*, a 35-minute show at the Charles Hayden Planetarium. Created by our Planetarium staff and narrated by Ed Helms, the show reveals the remarkable diversity of moons, as well as the significant, yet unsung roles they play in our solar system.

Our K-12 engineering curricula programs continue to expand nationally and internationally. With support from Raytheon, the Museum is creating a network of Engineering is Elementary® (EiE®) professional development providers who can train teachers through partnerships in Arizona, Washington, DC, and Alabama. And we are collaborating with the Bloomfield Science Museum of Israel and with educators from nine European countries to adapt EiE curriculum for use in schools and museums in Sweden, Denmark, the Netherlands, the United Kingdom, France, Germany, Italy, Greece, Czech Republic, and Israel.

We would like to thank all of our volunteers, interns, and staff for their outstanding work in fiscal year 2013. We would like to thank our trustees and overseers for their exemplary service and commitment to the Museum of Science. And we would like to thank our community of donors who support our mission to transform the nation's relationship with science and technology.

Ioannis N. Miaoulis
President and Director

Howard Messing
Chair, Board of Trustees

BOARD OF TRUSTEES (FY13)

Chair, Board of Trustees
Howard Messing

Vice Chairs, Board of Trustees

Joshua Boger
Paul Egerman
Donald M. Kaplan
Gwill E. York

TRUSTEES

Richard I. Anders
Jeffrey R. Beir
Vanu G. Bose
Richard M. Burnes Jr.
Richard A. Carpenter
Michael A. Champa
Yet-Ming Chiang
Stephen E. Coit
Jaishree Deshpande
Gary T. DiCamillo
Richard A. DiPerna
Deborah Dunsire
Gretchen S. Fish
Jonathan J. Fleming
Gary R. Gregg
Helen Greiner
Leslie E. Greis
Steven Haley
Daphne Hatsopoulos
Jane Hirsh
Carol Ann Kania
Ranch Kimball
Wendy W. Kistler
Kenneth D. Legg
Tom Leighton*
Leo X. Liu
Kurt Melden
Elizabeth Moore
Sandra O. Moose

Laura Barker Morse
Jane Pappalardo
Thomas J. Pincince
Eugene E. Record Jr.
John F. Reno
George Scangos
Matthew D. Shedd
Malcolm L. Sherman
Lawrence A. Siff
Ira Stepanian
Howard H. Stevenson
Henri A. Termeer
Michael G. Thonis
Hal R. Tovin

NON-ELECTED VOTING TRUSTEES

**President and Director,
Museum of Science**
Ioannis N. Miaoulis

Chair, Board of Overseers
Patricia M. Lassiter

Corporation Counsel
Wayne M. Kennard

Chair, The Innovators
Greg O'Shaughnessy

President, Volunteer Service League
Damase Caouette

EX OFFICIO TRUSTEES

**The Commissioner,
State Department of Education**
Mitchell D. Chester

**The Commissioner,
Department of Conservation
and Recreation**
Edward M. Lambert Jr.

TRUSTEES EMERITI

President Emeritus
David W. Ellis

John E. Abele
Edward J. Boudreau, Jr.*
Jane C. Bradley
Brit J. d'Arbeloff
Sally L. Dias
M. Dozier Gardner
Diane R. Gordon
John D. Hamilton, Jr.*
Julie E. Henry
Emily C. Hood
Frederick H. Lovejoy Jr.
Kenneth J. Novack
William Schawbel
Joan C. Suit
Samuel O. Thier

LIFE TRUSTEES

Vernon R. Alden
J.P. Barger
Warren S. Berg
Helene R. Cahners-Kaplan**
Edith LaC. Dabney
George P. Edmonds Jr.
John A. Fibiger
Walter J. Gamble
Paul E. Gray
Mrs. Roger L. Nichols
James R. Nichols
Mrs. James L. Phillips
Preston H. Saunders
Ralph Z. Sorenson
Neil W. Wallace
D. Reid Weedon Jr.
Sinclair Weeks Jr.

* Resigned
** Deceased

Annual Report 2013



Museum of Science.
mos.org

- \$55.7 million** operating budget
- \$96.4 million** endowment
- \$33.1 million** philanthropic contributions
- 341** full-time employees
- 83** part-time employees
- 280** temporary employees
- 607** volunteers contributed more than **48,182 hours** last year, the equivalent of **23** full-time staff
- 1.42 million visitors:** the most visited cultural attraction in Boston
- 50,401** member households
- 185** corporate members
- 170,753** school children took field trips to the Museum
- 17,899** children and chaperones attended overnight programs
- 101,815** individuals (students and public audiences) served by Traveling Programs, covering **68,846** miles throughout New England and New York State; **\$92,624** in scholarships awarded (approximately 24% of total Traveling Programs reservations)

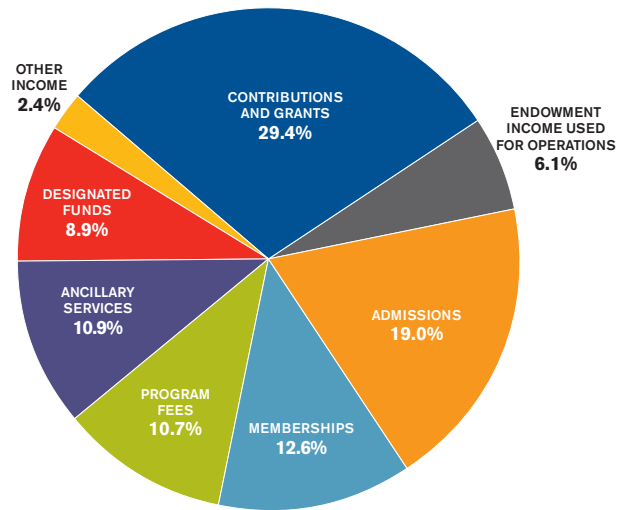


MUSEUM OF SCIENCE SENIOR MANAGEMENT TEAM

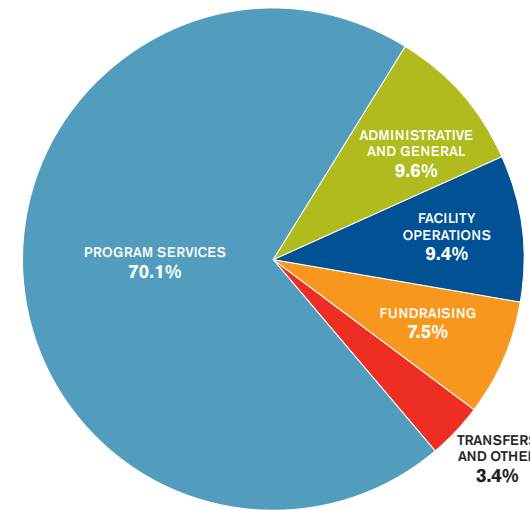
- President and Director**
Director, National Center for Technological Literacy®
Ioannis N. Miaoulis
- Chief Operating Officer**
Wayne M. Bouchard
- Senior Vice President, Strategic Initiatives**
Associate Director, National Center for Technological Literacy®
Lawrence Bell
- Senior Vice President, Advancement**
Joan Stephens Hadly

- Vice President, Marketing and External Affairs**
Cynthia G. Mackey
- Vice President, Visitor Services and Operations**
Jonathan R. Burke
- Vice President, Education**
Paul M. Fontaine
- Vice President, Human Resources**
Britton S. O'Brien
- Vice President, Finance and System Services**
John T. Slakey
- Manager, Office of the President and Trustee and Overseer Relations**
Amelia Brock

FISCAL YEAR 2013 SOURCES OF OPERATING FUNDS \$55,724,000



FISCAL YEAR 2013 USES OF OPERATING FUNDS \$55,691,000



ENDOWMENT MARKET VALUE JUNE 30

FY 2011	FY 2012	FY 2013
\$94,883,000	\$90,504,000	\$96,410,000

OPERATING INCOME AND EXPENSES FOR THE YEAR ENDING JUNE 30, 2013
(\$ in thousands)

	2011	2012	2013
Operating Income:			
SUPPORT	\$13,795	\$16,195	\$16,405
REVENUE	\$36,906	\$40,485	\$39,319
Total Operating Income	\$50,701	\$56,680	\$55,724
Operating Expenses			
PROGRAM SERVICES	\$33,145	\$36,136	\$39,016
SUPPORTING SERVICES	\$17,528	\$20,532	\$16,675
Total Operating Expenses	\$50,673	\$56,668	\$55,691
Net Operating Income	\$28	\$12	\$33

- Jamie Hyneman and Adam Savage, co-hosts of the Discovery Channel's *MythBusters*, drew a sold out crowd as they accepted the 2012 Bradford Washburn Award.
- The Yawkey Foundation awarded the Museum a \$10 million grant to create *The Yawkey Gallery on the Charles River*. The gallery will show the interrelationship between the natural and engineered worlds of the Charles River basin and watershed.
- *Women in Science (WIS)* celebrated its 15th anniversary. To mark the occasion, several WIS members established a new fund at the Museum, the Women in Science Endowed Innovation Fund (WISE) to ensure permanent support for programs that promote STEM fields to young women and girls.
- Revenue for the *Engineering is Elementary (EiE)* curriculum program grew to \$4.5 million in fiscal year 2013, with increased sales and distribution of storybooks, teacher guides, and design kits.
- The Colonel Francis T. Colby Award was presented to D. Reid Weedon, Jr. and John and Jane Bradley. The Colby Award honored their extensive service and lead support of the Museum of Science.
- Biogen Idec Foundation awarded the Museum of Science a \$1 million grant to help support outreach and science education programs aimed at middle school and high school students.
- The Museum of Science was one of more than 30 sites in 25 countries on four continents to host *World Wide Views on Biodiversity*, a citizen participation project focused on the global issue of biodiversity.
- The Charles Hayden Planetarium show *Undiscovered Worlds: The Search Beyond our Sun* won the "Best Immersive Full-dome Program Award" at the Jackson Hole Wildlife Film Festival.
- The *Computer Clubhouse* received the Boston Club's Advancement Award for its commitment to community and improving the lives of women and girls.
- MathWorks, a Premier Partner, once again sponsored *Free Film Fridays* in the Mugar Omni Theater throughout the month of March. More than 16,000 visitors took part in Free Film Fridays.
- The Museum honored its 2013 Stars of STEM, Liberty Mutual Insurance and Dr. Pendred Noyce and the Noyce Foundation, at the annual signature event, *The Science Behind the Stars*.

PHILANTHROPIC CONTRIBUTIONS

