



BOARD OF TRUSTEES (FY12)

Chair, Board of Trustees
Howard Messing

Vice Chairs, Board of Trustees

Joshua Boger
Paul Eggerman
Donald M. Kaplan
Gwill E. York

TRUSTEES

Richard I. Anders
Howard M. Anderson
Jeffrey R. Beir
Vanu G. Bose
Richard M. Burnes Jr.
Richard A. Carpenter
Michael A. Champa
Yet-Ming Chiang
Stephen E. Coit
James Daniell
Jaishree Deshpande
Gary T. DiCamillo
Richard A. DiPerna
Deborah Dunsire
Gretchen S. Fish
Jonathan J. Fleming
Helen Greiner
Leslie E. Greis
Daphne Hatsopoulos
Jane Hirsh
Carol Ann Kania
Wendy W. Kistler
Michael E. Kolowich
Kenneth D. Legg
Tom Leighton
Leo X. Liu
Kurt Melden
Elizabeth Moore

Sandra O. Moose
Laura Barker Morse
Jane Pappalardo
Thomas J. Pincince
Joyce L. Plotkin
Eugene E. Record Jr.
John F. Reno
Matthew D. Shedd
Malcolm L. Sherman
Lawrence A. Siff
Ira Stepanian
Howard H. Stevenson
Henri A. Termeer
Michael G. Thonis
Hal R. Tovin

NON-ELECTED VOTING TRUSTEES

**President and Director,
Museum of Science**
Ioannis N. Miaoulis

Chair, Board of Overseers
Ranch C. Kimball

Corporate Counsel
Wayne M. Kennard

Chair, The Innovators
Greg O'Shaughnessy

President, Volunteer Service League
Susan A. Heavner

EX OFFICIO TRUSTEES

**The Commissioner,
State Department of Education**
Mitchell D. Chester

**The Commissioner, Department of
Conservation and Recreation**
Edward M. Lambert Jr.

TRUSTEES EMERITI

President Emeritus
David W. Ellis

John E. Abele
Edward J. Boudreau Jr.
Jane C. Bradley
Brit J. d'Arbeloff
Sally L. Dias
M. Dozier Gardner
Diane R. Gordon
John D. Hamilton Jr.
Julie E. Henry
Emily C. Hood
Frederick H. Lovejoy Jr.
Kenneth J. Novack
William Schawbel
Joan C. Suit
Samuel O. Thier

LIFE TRUSTEES

Vernon R. Alden
J.P. Barger
Warren S. Berg
Helene R. Cahners-Kaplan*
Edith LaC. Dabney
George P. Edmonds Jr.
John A. Fibiger
Walter J. Gamble
George P. Gardner Jr.*
Paul E. Gray
John Lowell*
Mrs. Roger L. Nichols
James R. Nichols
Mrs. James L. Phillips
Preston H. Saunders
Ralph Z. Sorenson
Neil W. Wallace
D. Reid Weedon Jr.
Sinclair Weeks Jr.

*Deceased

Annual Report 2012



Museum of Science.
mos.org

It has been another strong year for the Museum of Science, with a 6.9% increase in member households and a 2.6% increase in new gifts and commitments. The public phase of the Campaign for the Museum of Science continues to show great momentum. At the close of fiscal year 2012, we had raised \$192 million toward our comprehensive goal of \$250 million.

Thanks to a \$5 million grant from the Massachusetts Life Science Center, we have begun construction of our new exhibit, the *Hall of Human Life*. The exhibit, which will revolutionize the way people think about their own biology and health, is set to open in November 2013. The Museum also received a \$1 million donation from Raytheon to support the training of elementary school teachers using the *Engineering is Elementary*® curriculum, establishing new professional development centers in Washington, D.C., Phoenix, Arizona, and Huntsville, Alabama.

It was a year of awards and expansion for the Museum's National Center for Technological Literacy (NCTL). Two NCTL-produced films earned awards in 2012: "Hands-On, Minds-On: Bringing Engineering Design to High School Classrooms" received a Telly Award and "InvenTEENS: A High School Engineering Design Challenge" won a CINE Golden Eagle Award. With our engineering curricula programs in all 50 states, NCTL is going global. The Museum of Science has teamed up with 25 international science museums, schools, universities, and other institutions to launch Project ENGINEER. The goal is to introduce engineering in elementary schools and museums in Italy, Netherlands, Sweden, Czech Republic, Denmark, Greece, France, Germany, United Kingdom, and Israel.

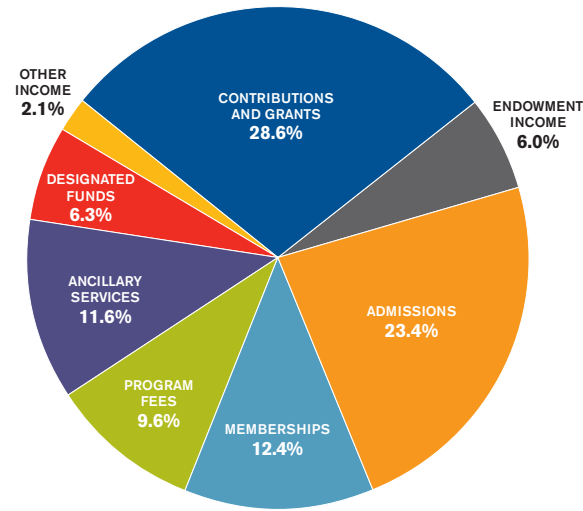
We would like to thank all of our volunteers, interns, and staff for their hard work in fiscal year 2012. And we would like to thank our community of donors who generously support our mission to transform the nation's relationship with science and technology.

Ioannis N. Miaoulis
President and Director

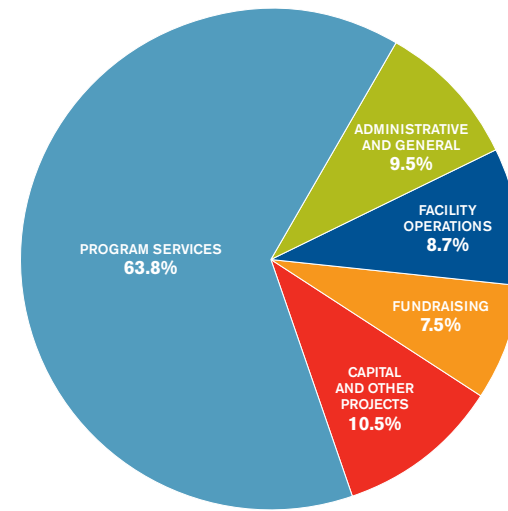
Howard Messing
Chair, Board of Trustees

- \$56.6 million** operating budget
- \$90.5 million** endowment
- \$27.5 million** philanthropic contributions
- 340** full-time employees
- 56** part-time employees
- 283** temporary employees
- 709** volunteers contributed more than **58,143 hours** last year, the equivalent of 26 full-time staff
- 1.64 million visitors:** the most visited cultural attraction in Boston
- 54,550** member households
- 185** corporate members
- 210,828** school children took field trips to the Museum
- 19,289** children and chaperones attended overnight programs
- 97,000** individuals (students and public audiences) served by Traveling Programs, covering **65,363** miles throughout New England and New York State

FISCAL YEAR 2012 SOURCES OF OPERATING FUNDS \$56,680,000



FISCAL YEAR 2012 USES OF OPERATING FUNDS \$56,668,000



ENDOWMENT MARKET VALUE JUNE 30

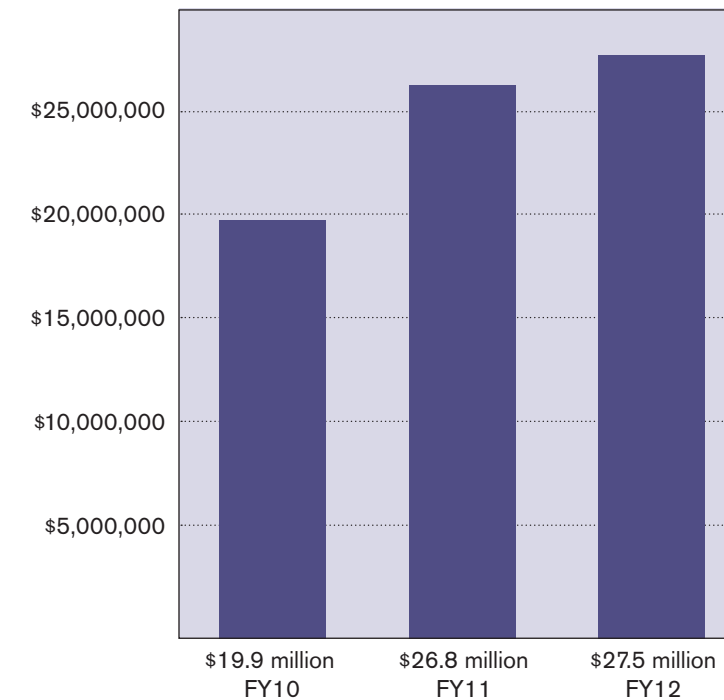
2010	2011	2012
\$84,085,000	\$94,883,000	\$90,504,000

OPERATING INCOME AND EXPENSES FOR THE YEAR ENDING JUNE 30, 2012 (\$ in thousands)

	2010	2011	2012
Operating Income:			
SUPPORT REVENUE	\$10,487	\$13,795	\$16,195
REVENUE	\$40,209	\$36,906	\$40,485
Total Operating Income	\$50,696	\$50,701	\$56,680
Operating Expenses			
PROGRAM SERVICES	\$32,251	\$33,145	\$36,136
SUPPORTING SERVICES	\$18,427	\$17,528	\$20,532
Total Operating Expenses	\$50,678	\$50,673	\$56,668
Net Operating Income	\$18	\$28	\$12

- In January 2012, the Massachusetts Life Sciences Center awarded a \$5 million grant to the Museum to help fund its new exhibit, the *Hall of Human Life*. The exhibit is set to open in November 2013.
- Yvonne Spicer, vice president for advocacy and educational partnerships, was honored at the Advancing Women in the Business of Science & Technology (WEST) Leadership for Societal Impact Awards and was named a Distinguished Technology Educator by the Technology & Engineering Educators Association.
- Twenty-four couples raced to the altar in April 2012 at the Museum's first ever Wedding Marathon.
- The Museum raised \$450,000 at its third annual signature event, *Science Behind the Stars*, on April 26, 2012. Massachusetts Governor Deval Patrick, Lieutenant Governor Timothy Murray, and Intel Corporation were honored with Stars of STEM awards.
- The Mugar Omni Theater celebrated its silver anniversary in March 2012. More than 17 million guests have visited this Museum icon over the last 25 years.
- In 2011, Raytheon donated \$1 million to the Museum to support the Engineering is Elementary® (EiE®) program, and the Museum completed the first edition of EiE's 20-unit curriculum.
- Over 250,000 guests explored Imperial Rome at the Museum's *A Day in Pompeii* exhibit.
- Fifteen runners raised \$103,000 for the Museum's Traveling Programs by completing the Boston Marathon® on April 16, 2012. These funds will support new program development and provide scholarships for traveling programs.
- President and Director of the Museum Ioannis Miaoulis received the 2011 American Society of Engineers' Ralph Coats Roe Medal for his outstanding contributions to engineering education.
- The Highland Street Foundation made a four-year, \$100,000 grant commitment to the Museum. The money will be used to fund field trips and transportation for underserved Boston-area schools.
- Harvard Pilgrim Health Care and MathWorks, both premier partners of the Museum since 2008, have renewed their support with three-year commitments.
- What I Eat*, an exhibit of 25 portraits and essays by Peter Menzel and Faith D'Aluisio that featured in the Museum's Art and Science Gallery, received national attention when both the *New York Times* and the *CBS Early Show* reported on the exhibit.
- Christine Reich, the Museum's director of research and evaluation, was recognized by the White House as one of 14 *Champions of Change* in STEM education and was selected to be a 2012 - 2013 Noyce Leadership Fellow.

PHILANTHROPIC CONTRIBUTIONS



MUSEUM OF SCIENCE SENIOR MANAGEMENT TEAM

President and Director
Director, National Center for Technological Literacy®
Ioannis N. Miaoulis

Chief Operating Officer
Wayne M. Bouchard

Senior Vice President, Strategic Initiatives
Associate Director, National Center for Technological Literacy®
Lawrence Bell

Senior Vice President, Advancement
Joan Stephens Hadly

Vice President, Marketing and External Affairs
Cynthia G. Mackey

Vice President, Visitor Services and Operations
Jonathan R. Burke

Vice President, Education
Paul M. Fontaine

Vice President, Human Resources
Britton S. O'Brien

Vice President, Finance and System Services
John T. Slakey

Manager, Office of the President and Trustee and Overseer Relations
Amelia Brock